



Sonoma Water

**State Water Resources Control Board
Temporary Urgency Change Orders (10/31/2024)
Russian River Hydrologic & Water Quality Report
November 8, 2024 - November 14, 2024**

Prepared as a requirement of the Orders approving Sonoma Water's Petition for Temporary Urgency Change in Permits 12947A, 12949, 12950, and 16596 (Applications 12919A, 15736, 15737, and 19351).

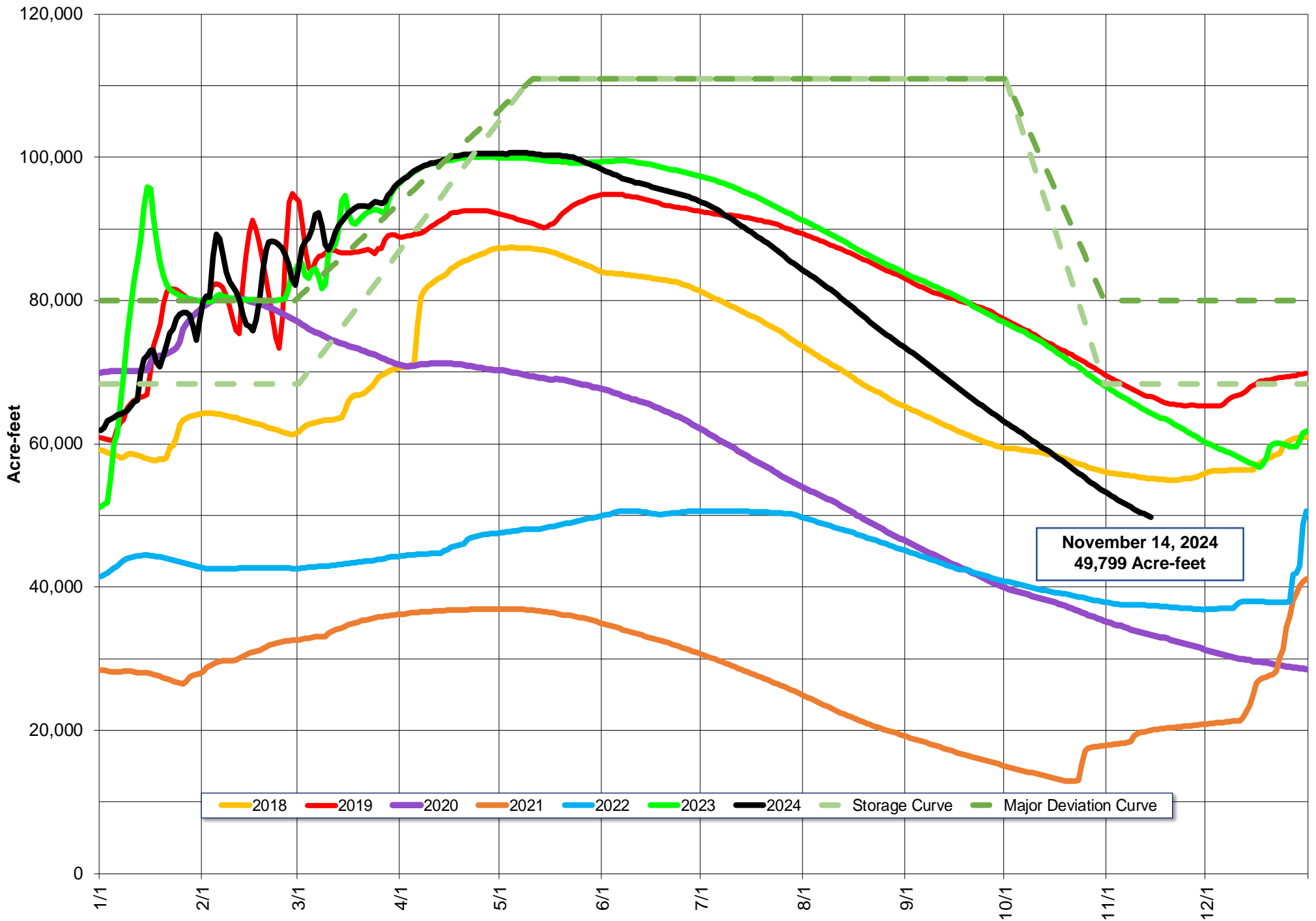
Instream Flow Requirements as of November 14, 2024

Basis	Reach	Instantaneous (cfs)	5-day Average (cfs)
Modified Per Order: Normal Condition	Upper Russian River	150	-
Modified Per Order: Normal Condition	Dry Creek	105	-
Modified Per Order: Normal Condition	Lower Russian River	125	-

Upper and Lower Russian River are based on criteria as established in the Order issued 10/31/2024.

Lake Mendocino

Lake Mendocino Storage 2018 - 2024 and Storage Curve



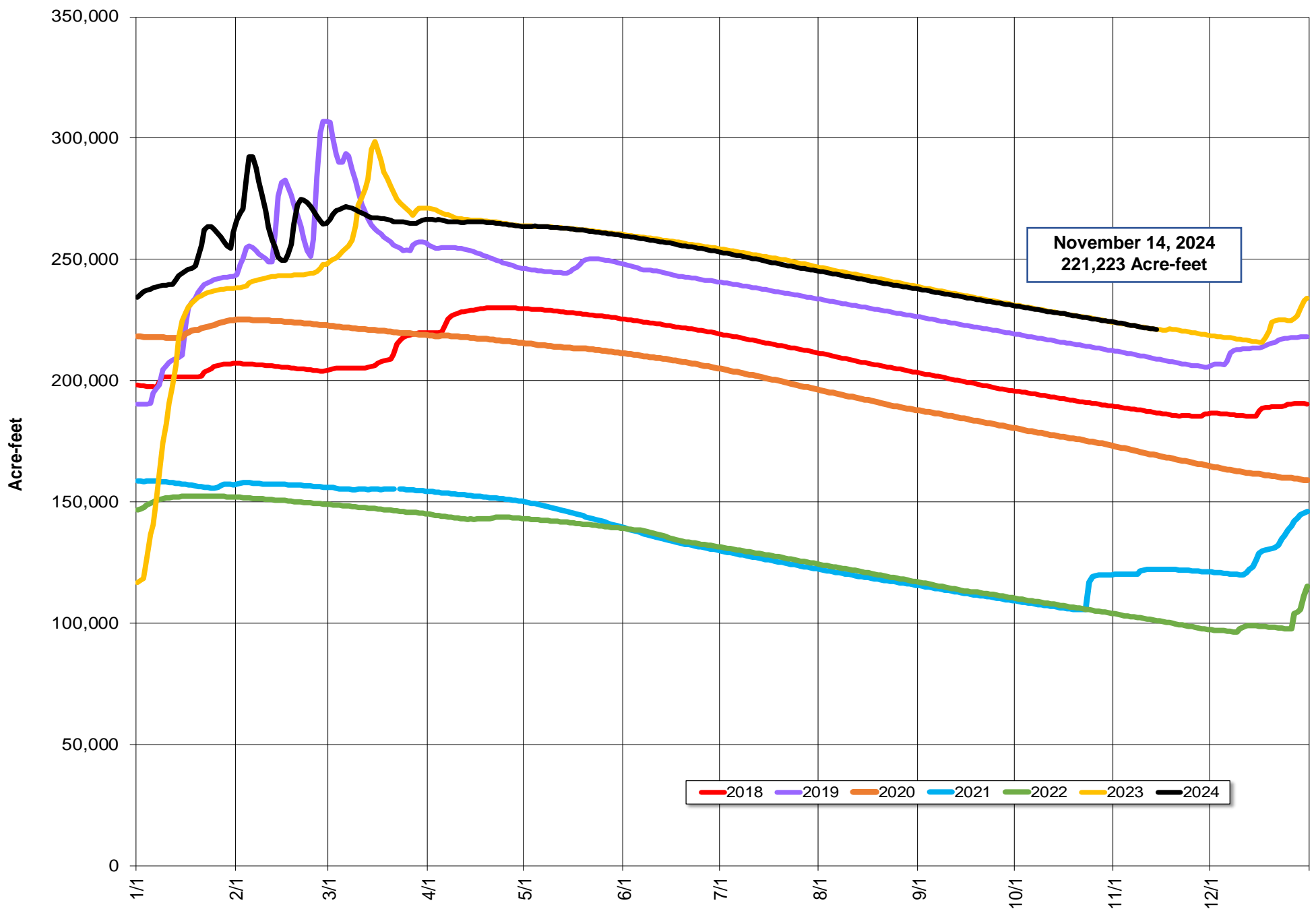
Storage (acre-feet)	November 14, 2024	49,799	
Change in Storage (acre-feet)	Last 30 days	-8,803	Average Daily Rate
	Last 7 days	-1,343	-192
Daily Inflow (cfs)	Last 7 days	Min	25
		Max	76
		Mean	53
Release (cfs)	Last 7 days	Min	157
		Max	173
		Mean	166

Lake Sonoma



Todd Schram, February 10, 2024

Lake Sonoma Storage 2018-2024



Storage (acre-feet)	November 14, 2024	221,223	
		Total	Average Daily Rate
Change in Storage (acre-feet)	Last 30 days	-6,592	-220
	Last 7 days	-1,407	-201
Daily Inflow (cfs)	Last 7 days	Min	0
		Max	46
		Mean	12
Release (cfs)	Last 7 days	Min	106
		Max	111
		Mean	109

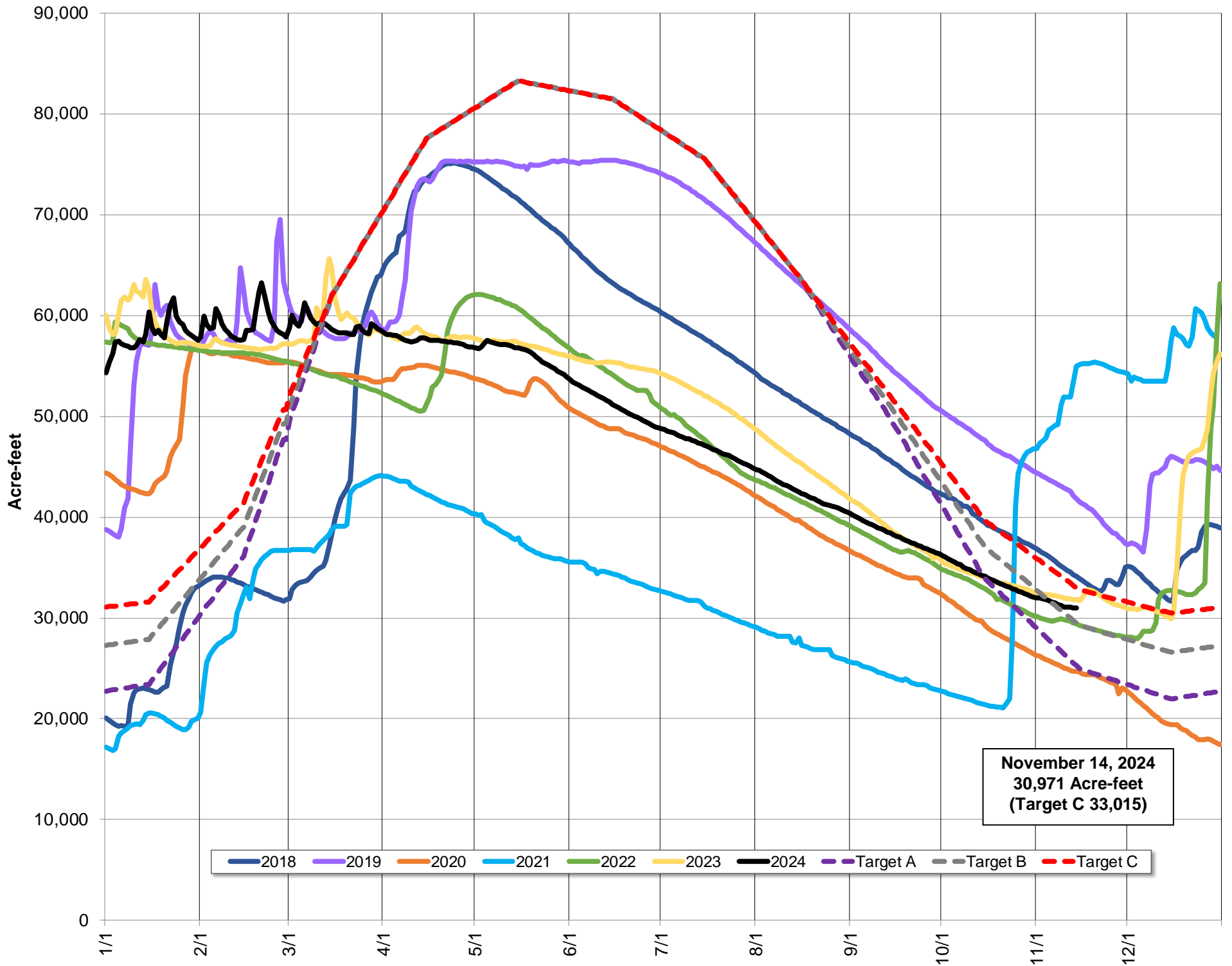
Potter Valley Project

PVP Diversion (cfs)	November 14, 2024	45
---------------------	-------------------	----

Parameter	Date Range	Cumulative	Daily Average
Inflow* (acre-feet)	October 1, 2023 - November 14, 2024	2,488	55
	Last 7 days	693	99

*Inflow calculation based on criteria established in D1610

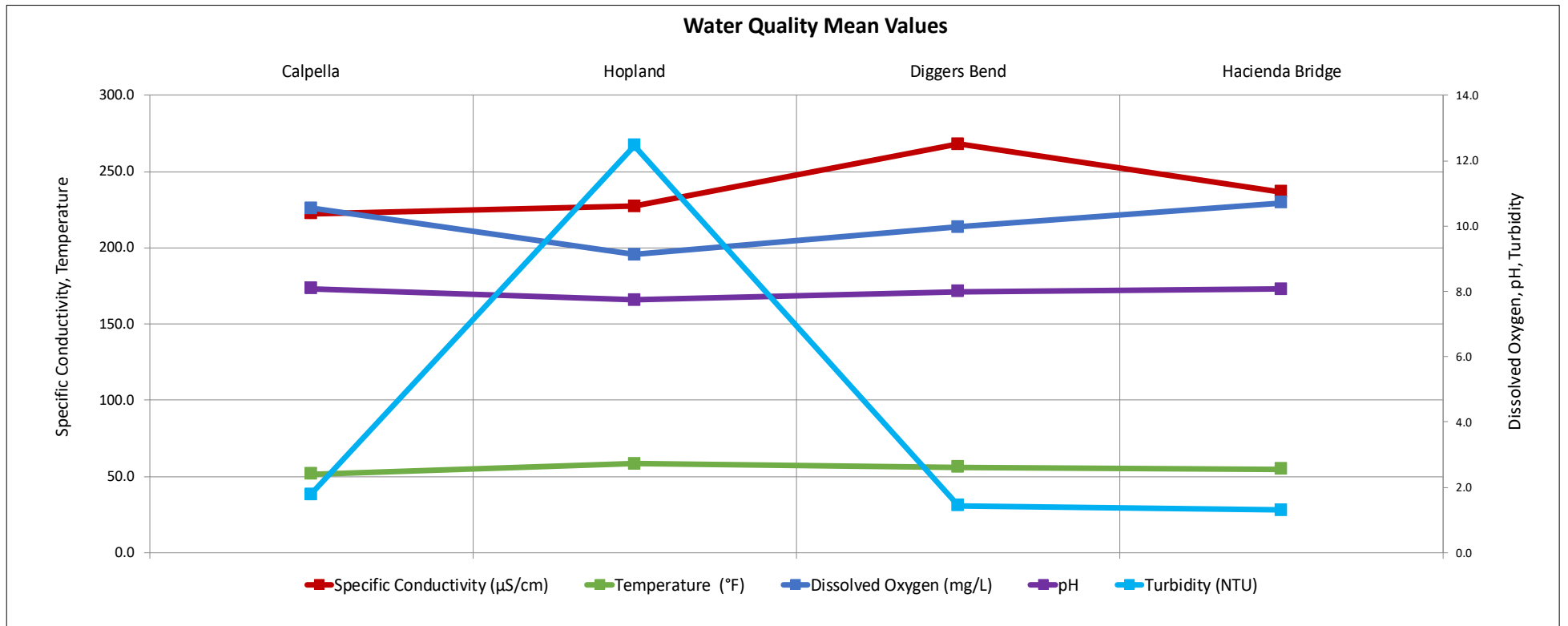
Lake Pillsbury Storage 2018 - 2024 and Target Storage Scenarios



Russian River Flows (November 8, 2024 - November 14, 2024)

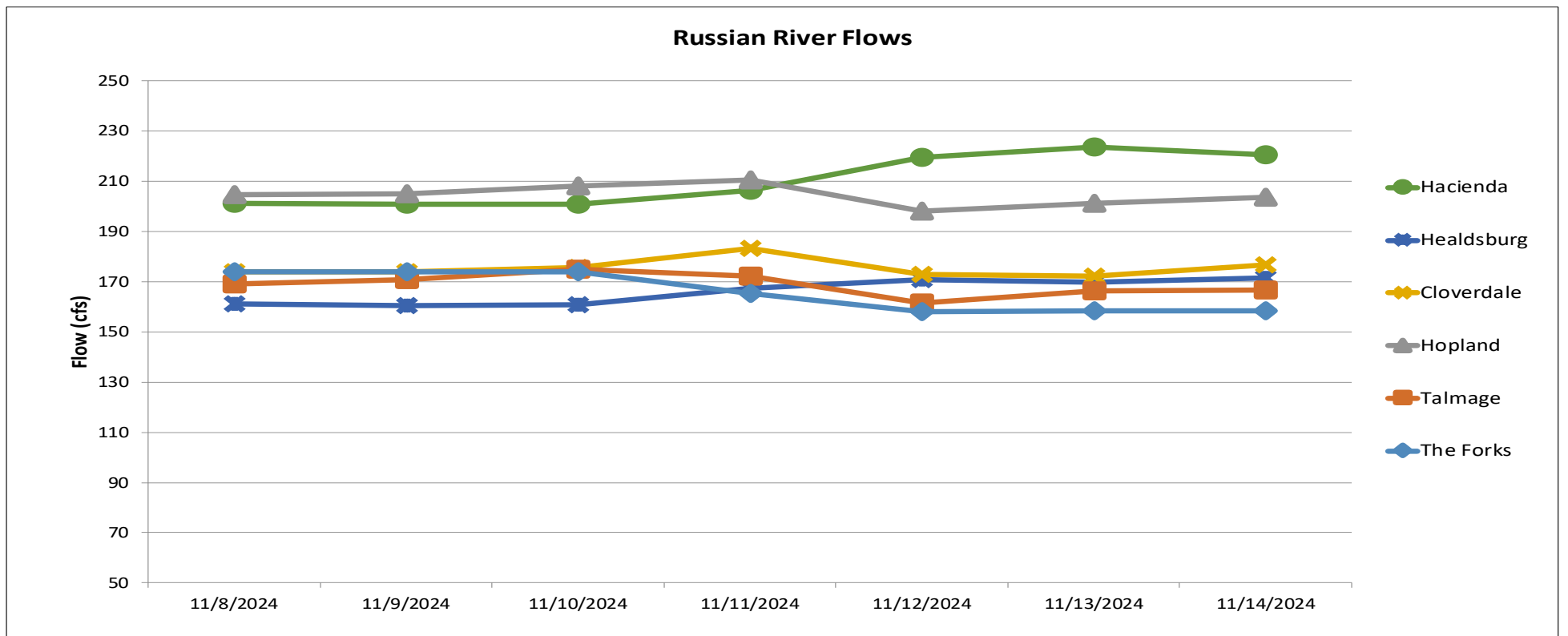
Parameter		Calpella	Hopland	Cloverdale*	Jimtown*	Diggers Bend	River Diversion System at Mirabel*	Hacienda Bridge	Johnsons Beach*
		USGS 11461500	USGS 11462500	USGS 11463000	USGS 11463682	USGS 11463980	SCWA	USGS 11467000	SCWA
Temperature (°F)	Min	49.5	56.8		54.5	53.8		52.7	
	Max	53.8	60.1		59.0	58.3		56.3	
	Mean	51.5	58.1		56.8	56.2		54.6	
Specific Conductivity (µS/cm)	Min	217.0	222.0			265.0		230.0	
	Max	228.0	234.0			272.0		258.0	
	Mean	222.3	227.1			268.2		236.7	
Dissolved Oxygen (mg/L)	Min	10.1	8.6			8.7		9.9	
	Max	11.2	9.6			12.1		11.7	
	Mean	10.5	9.1			10.0		10.7	
Dissolved Oxygen (% Saturation)	Min	92.6	85.0			83.5		92.7	
	Max	101.1	94.4			116.8		110.5	
	Mean	95.2	89.5			95.5		100.7	
pH	Min	8.0	7.6			7.7		7.9	
	Max	8.2	7.9			8.4		8.3	
	Mean	8.1	7.7			8.0		8.1	
Turbidity (NTU)	Min	0.9	8.7			1.1		0.9	
	Max	6.0	18.1			2.1		2.6	
	Mean	1.8	12.5			1.4		1.3	

*Station operated seasonally



Gage	24-hr Average Flow (cfs)						
	Nov 8, 2024	Nov 9, 2024	Nov 10, 2024	Nov 11, 2024	Nov 12, 2024	Nov 13, 2024	Nov 14, 2024
The Forks*	174	174	174	165	158	158	158
Talmage USGS 11462080	169	171	175	172	162	166	167
Hopland USGS 11462500	205	205	208	211	198	201	204
Cloverdale USGS 11463000	174	174	176	183	173	172	177
Healdsburg USGS 11464000	161	161	161	167	171	170	172
Hacienda USGS 11467000	201	201	201	207	220	224	220

*West Fork(USGS 11461000) + East Fork (Coyote Valley Dam Release)

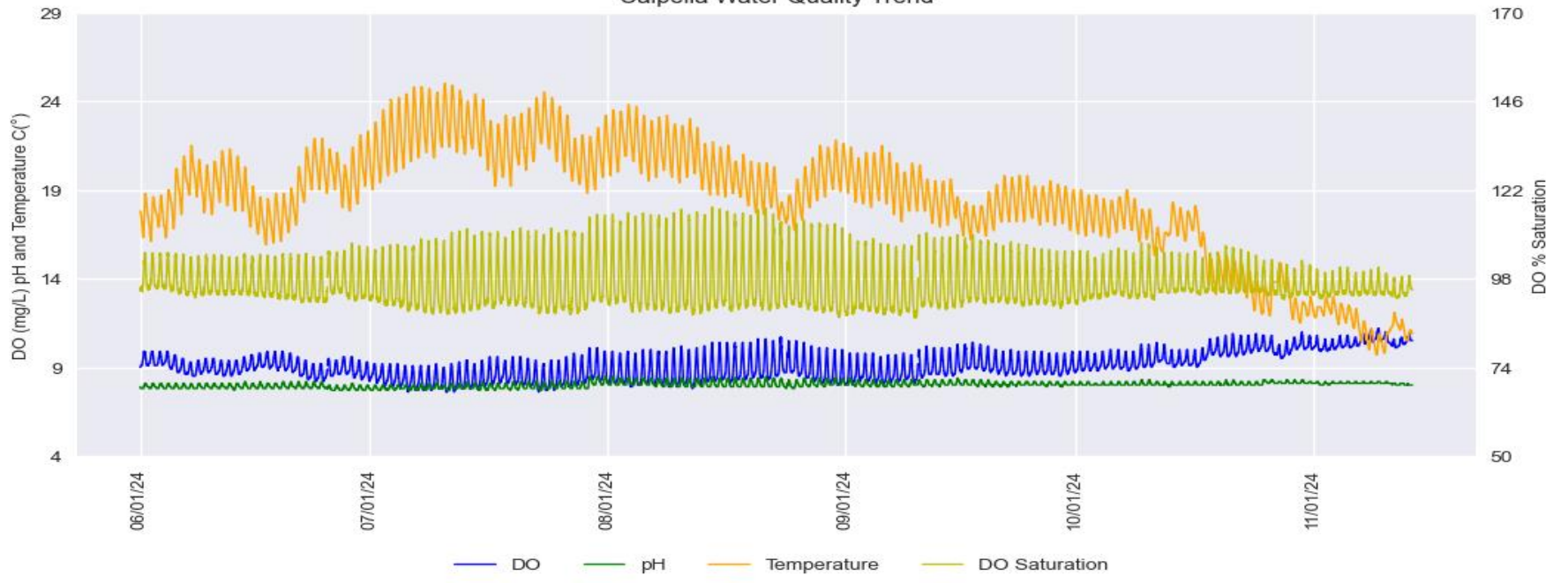


Russian River Water Quality June 1, 2024 – November 14, 2024

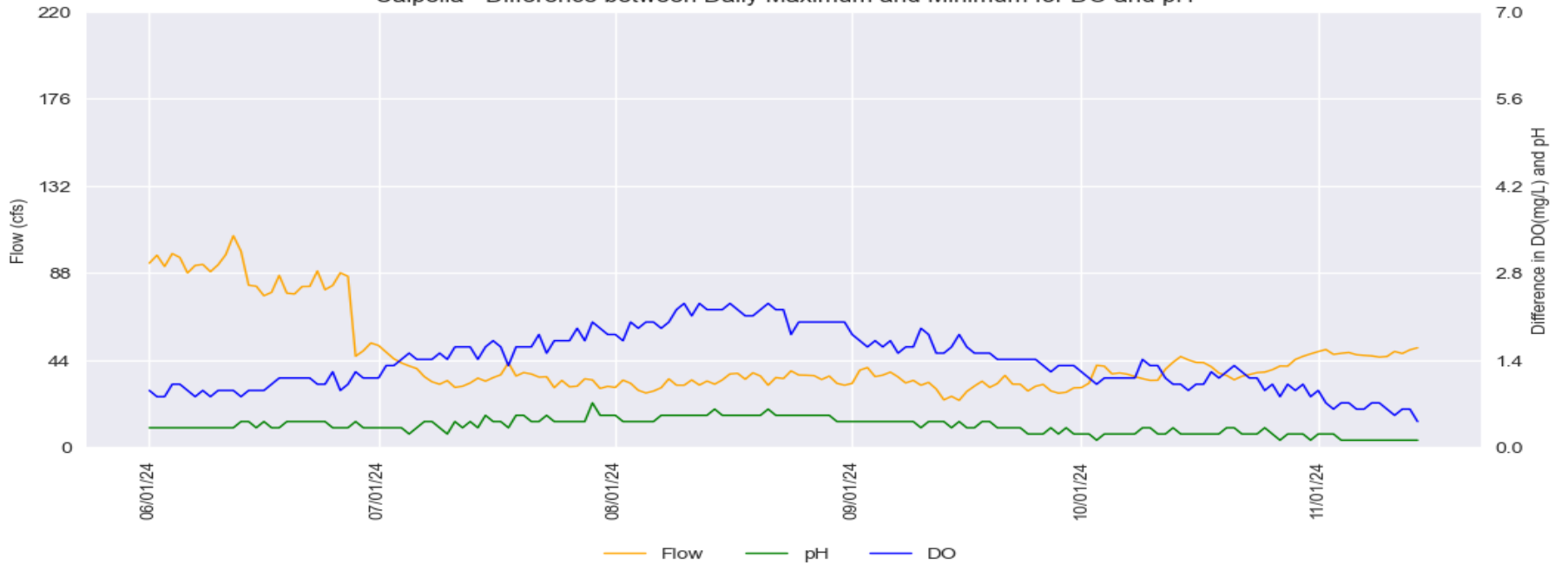
Provisional Data Subject to Revision

Calpella

Calpella Water Quality Trend

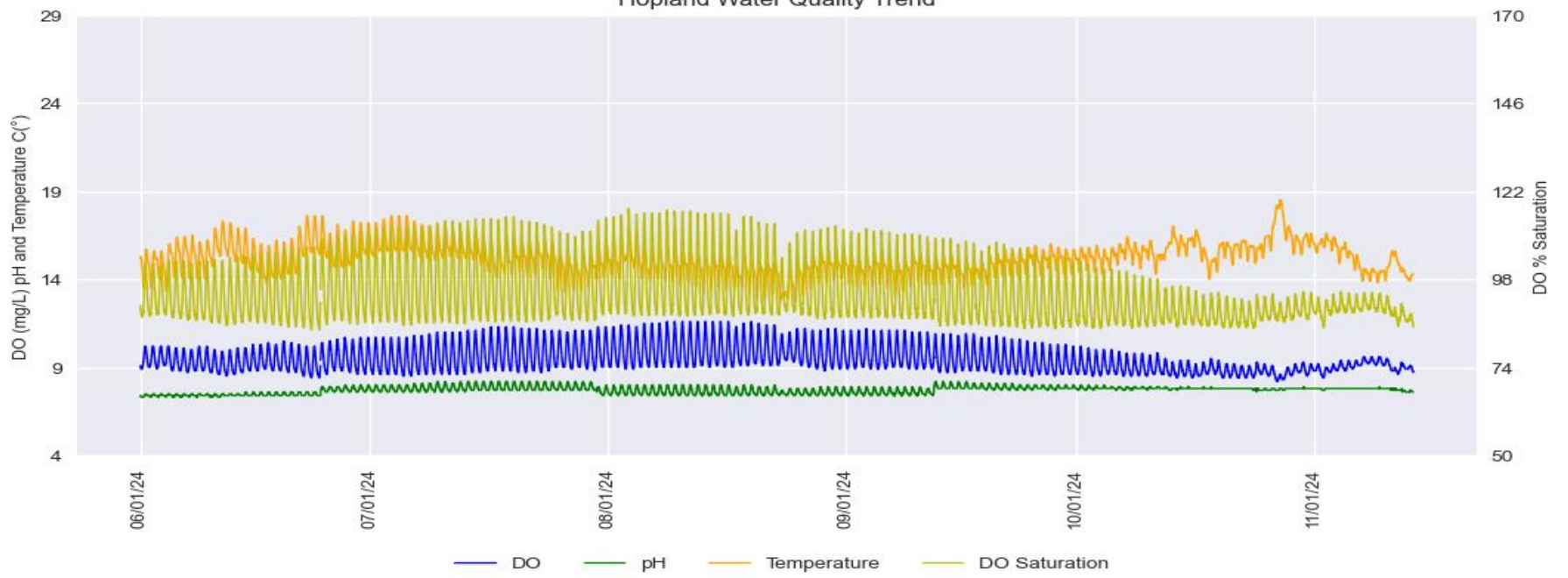


Calpella - Difference between Daily Maximum and Minimum for DO and pH

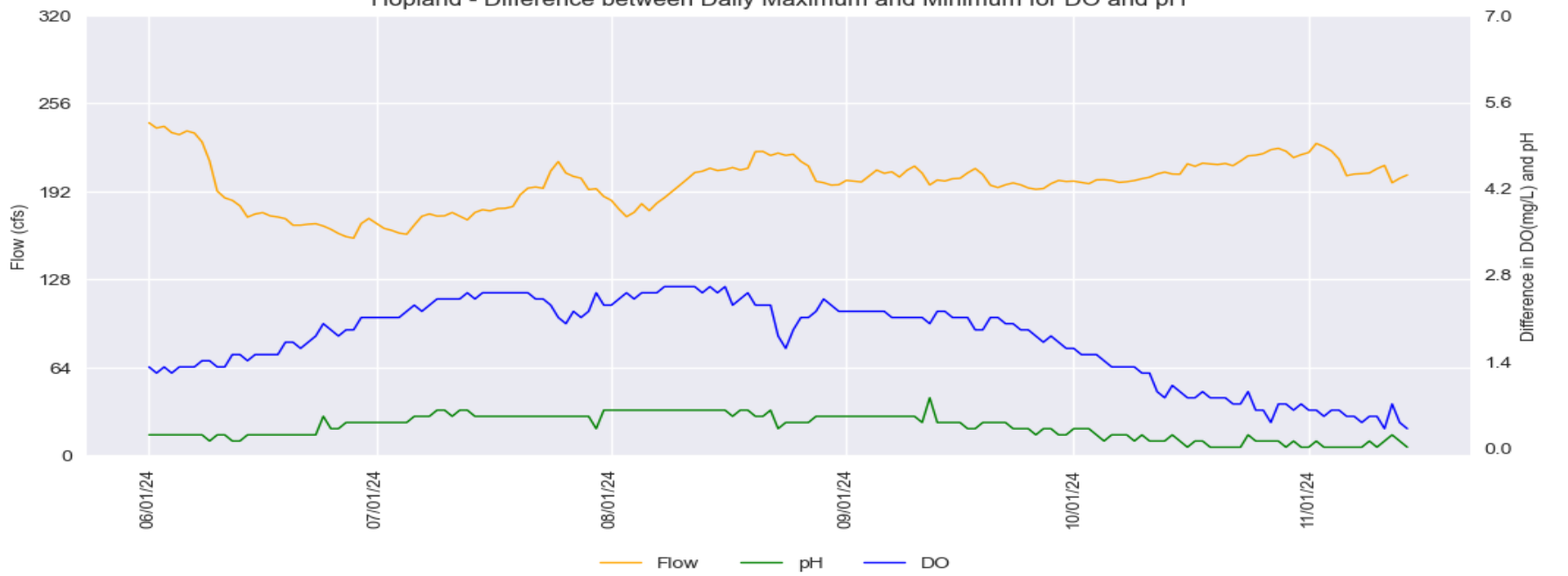


Hopland

Hopland Water Quality Trend



Hopland - Difference between Daily Maximum and Minimum for DO and pH

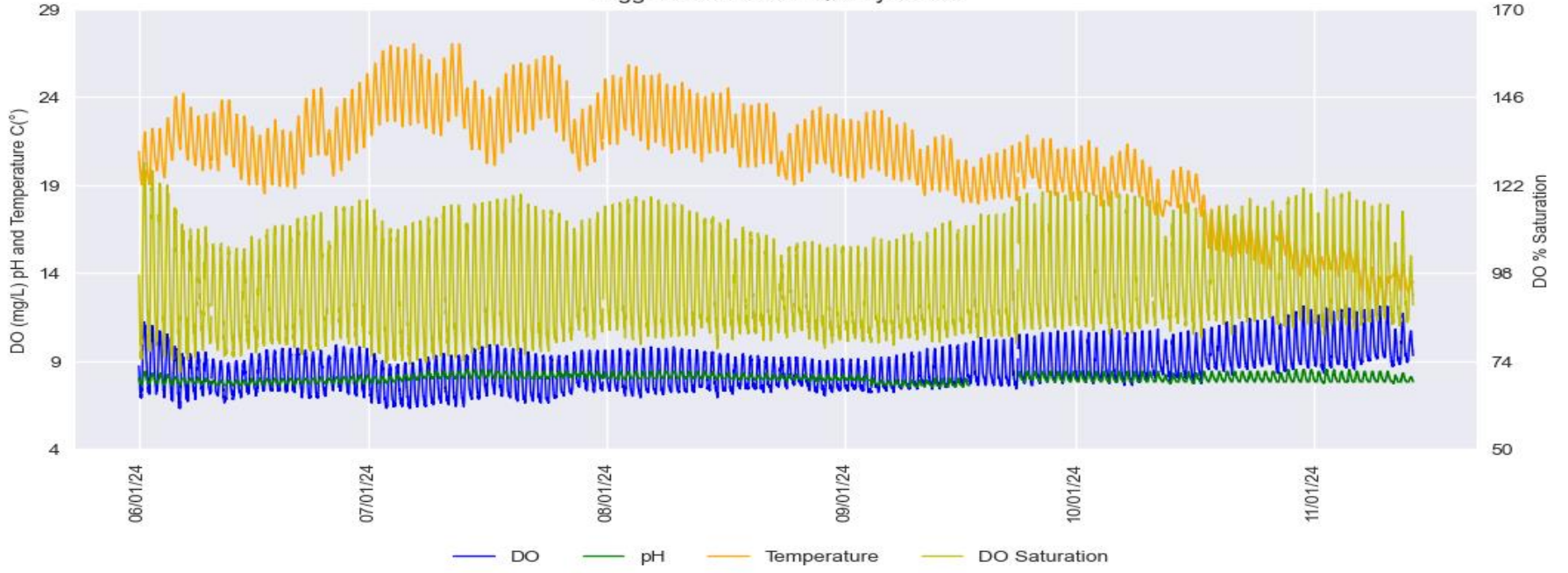


Russian River Water Quality June 1, 2024 – November 14, 2024

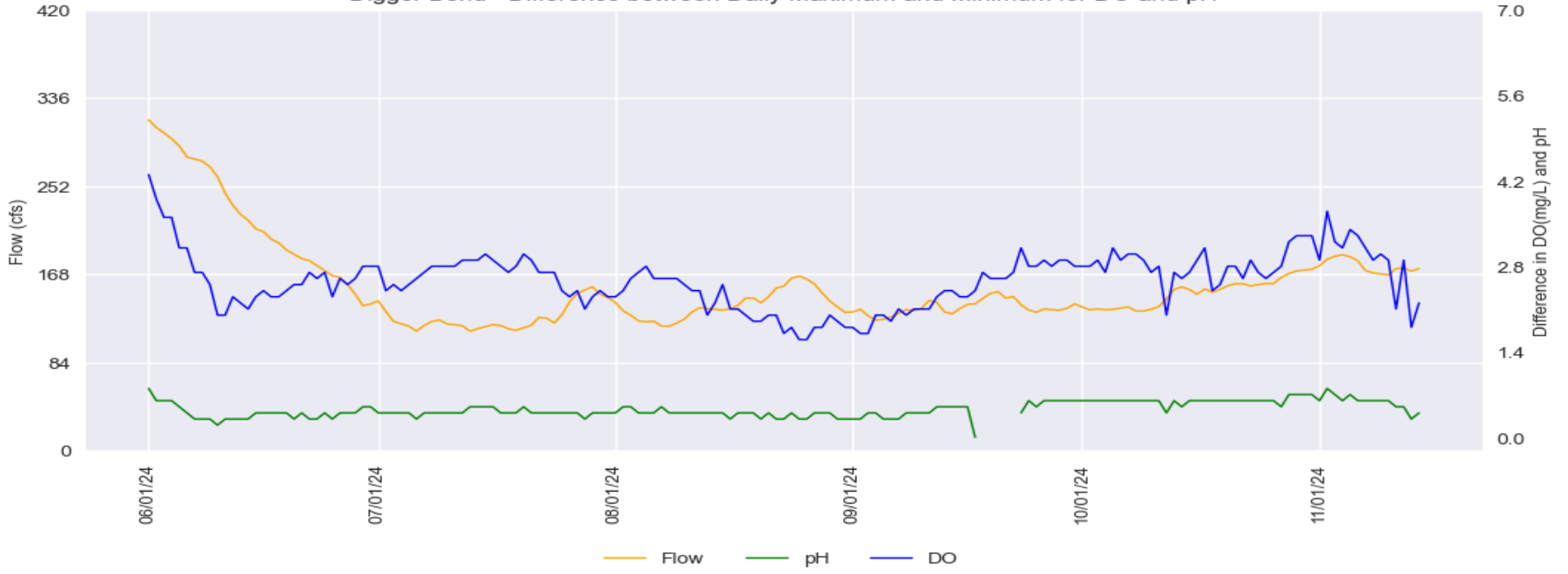
Provisional Data Subject to Revision

Digger Bend

Digger Bend Water Quality Trend



Digger Bend - Difference between Daily Maximum and Minimum for DO and pH

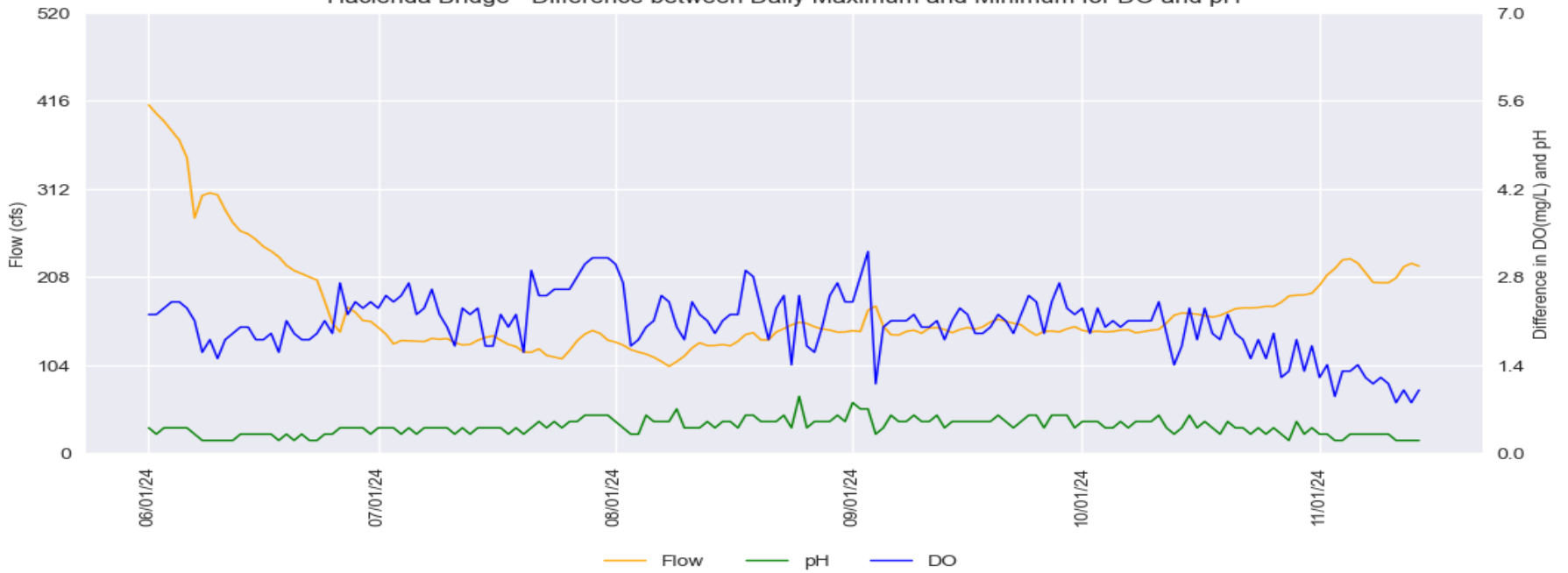


Hacienda Bridge

Hacienda Bridge Water Quality Trend



Hacienda Bridge - Difference between Daily Maximum and Minimum for DO and pH

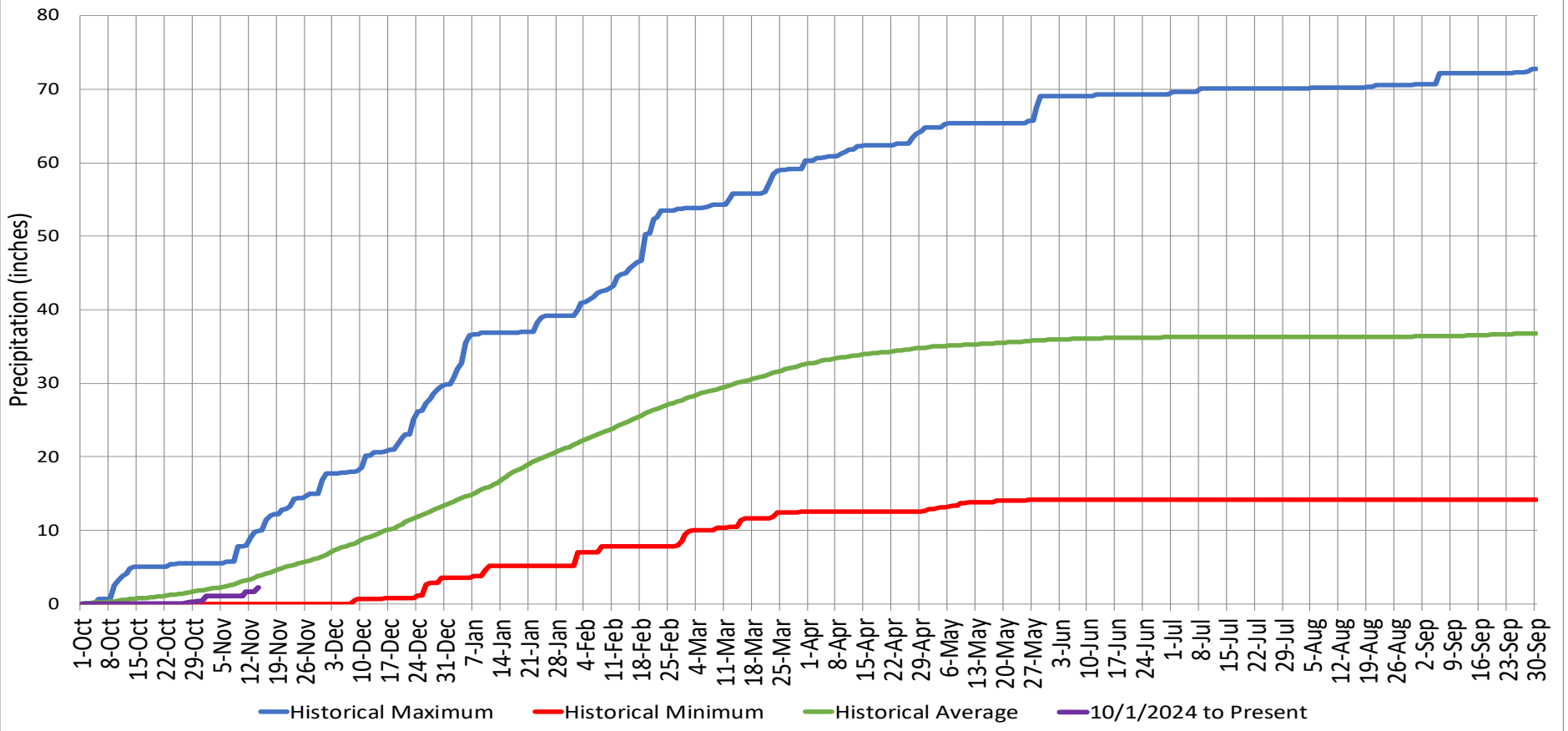


Precipitation

Ukiah Municipal Airport (WBAN: 72590523275 (KUKI))

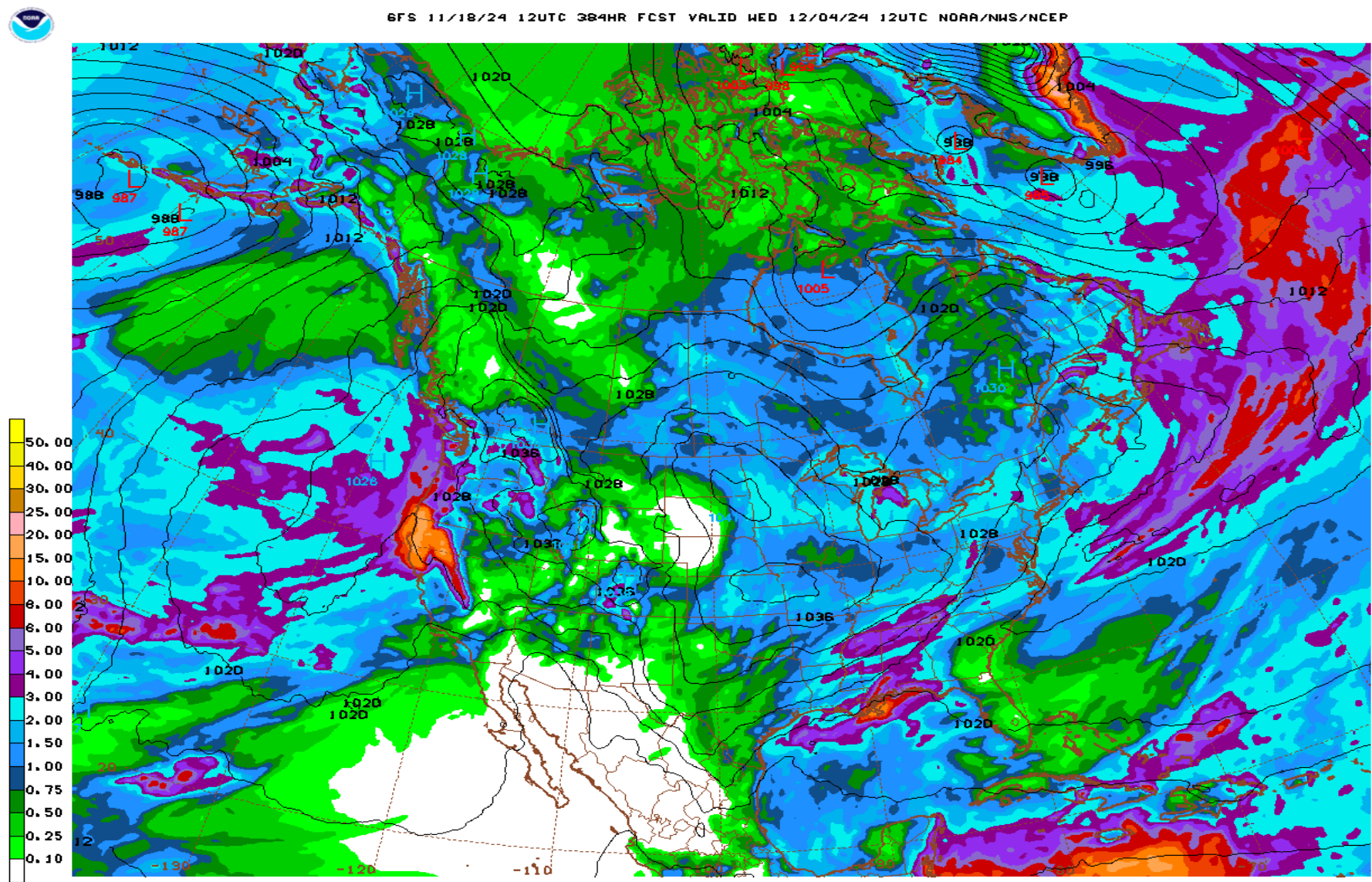
Date Range	Cumulative (inches)
Oct 1, 2024 - Nov 14, 2024	2.19
Last 7 Days*	1.06

Cumulative Precipitation Comparison of Current Year versus Historic Record



Global Forecast System Model 16-day Cumulative Precipitation Forecast

6FS 11/18/24 12UTC 384HR FCST VALID MED 12/04/24 12UTC NOAA/NWS/NCEP



6FS MED 241204/1200V384 EMSL (4MB), 384HR ACCUMULATED PRECIP (IN)

Date Range
Nov 18 - Dec 4, 2024

Forecasted Cumulative (inches)
12.20